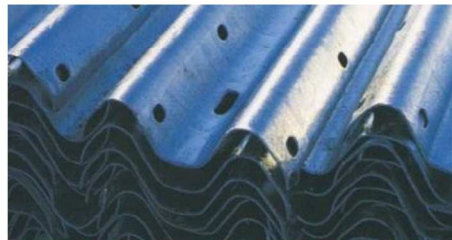


# TRAFFIC SOLUTIONS



**ONTARIO**  
**BOLLARDS**  
**TOTAL PROTECTION SPECIALISTS**

## Guardrail / Guiderail

W-Beam Guiderail is the clear choice when you need traffic protection. No matter what the use – road dividers and barriers, bridge approaches and railings, curves and other highway hazards, or traffic direction – W-Beam Guiderail provides highly visible protection in all weather conditions.

A proven performer in minimizing accident severity, property damage and injuries when collision occurs, Guiderail not only absorbs the shock of impact, but helps to guide out of control vehicles to safer stops.

Guiderail is manufactured to the highest specifications from 2.5 mm steel. All components, including nuts and bolts, are hot dip galvanized that provides double the zinc protection of pre-galvanized steel. This ensures long service life for all applications.

## Guardrail is Safe, Reliable, and Cost Effective.

### Economics

- Low initial material costs
- Straightforward installation and uncomplicated repairs. When repairs are required, only damaged rail or posts need to be replaced. The remaining section of Guardrail still provides effective protection
- Routine maintenance is not required. Adjustment or tightening is not necessary during the service life of the barrier
- Systems can have a service life of 30 years or longer

### Versatility

- Applications include parking lots, loading docks, sides of buildings, single and multi-lane highways, bridges and bridge approaches.
- Guardrail systems can be tailored to any application.
- Rail systems can be designed with steel posts and offset blocks.

### Performance

- Minimizes accident severity, damages and injuries when collisions occur.
- Guides vehicle away from the hazard by the “ribbon effect” of the continuous guardrail during vehicle impact.
- Meets OPSD specifications. All hardware and components are galvanized according to CSA G164 requirements.

## Ontario Bollards offer

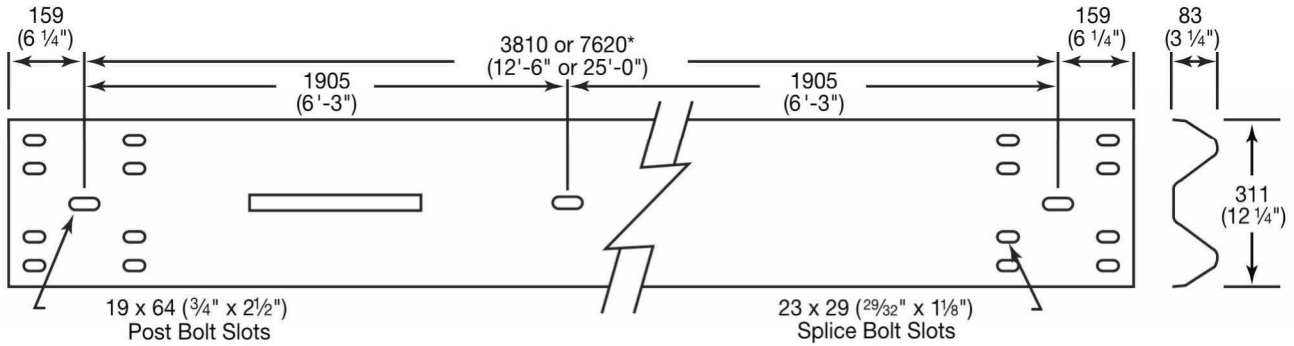
- W-Beam Guiderail
- Terminal Ends
- Steel Posts
- Offset Guide
- Installation across all Ontario



[www.ontariobollards.com](http://www.ontariobollards.com)

## RAIL

### W-Beam



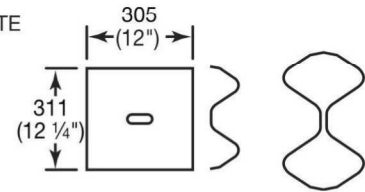
#### DIMENSIONS AND MECHANICAL PROPERTIES (UNCOATED)

	2.67	3.43
Thickness (mm)	2.67	3.43
Beam width, minimum (mm)	305	305
Beam depth, minimum (mm)	76	76
Cross-sectional area (mm <sup>2</sup> )	1 297	1665
Moment of inertia (mm <sup>2</sup> )	973 980	1 252 860
Section modulus (mm <sup>2</sup> )	22 778	29 005
Weight (approximate) (kg/m)	10.15	13.05

#### CENTRE PUNCHING

3810mm	SPACING	7620mm
3810mm	3810mm O.C.	58G
1905mm	1905mm O.C.	60G
952mm	952mm O.C.	61G

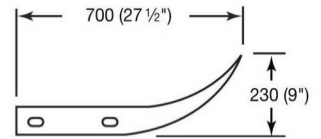
#### BACK-UP PLATE 3G



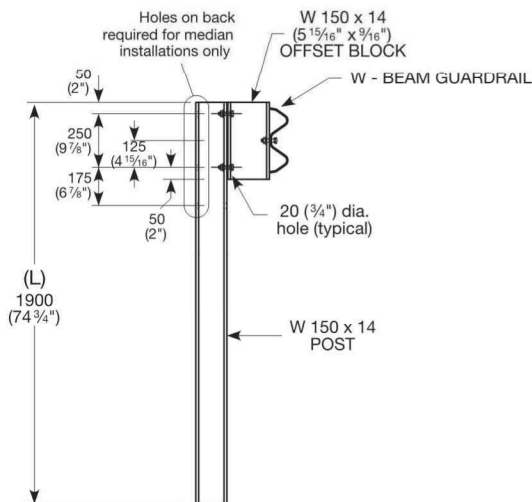
Note: Tubular W-Beam Rail and Components available upon request.

#### NOMINAL WEIGHT

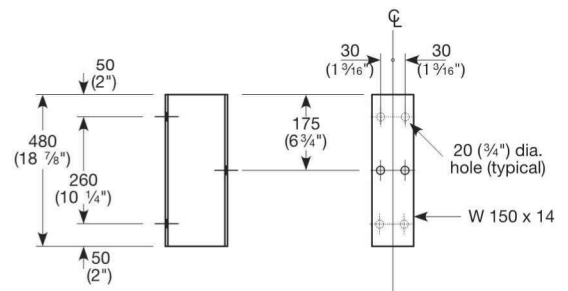
	kg	lbs
W-Beam		
901G (2.8mm)	8.2	18



End Section (Flared)



Typical Steel Post, ON



Standard Offset Block, ON

**ONTARIO**  
**BOLLARDS**  
**TOTAL PROTECTION SPECIALISTS**

53 Armstrong Avenue, Unit 1-4  
Georgetown, Ontario, L7G 4S1  
Ph: 289-891-8559, Fx: 905-248-3629  
E: [info@ontariobollards.com](mailto:info@ontariobollards.com)  
W: [www.ontariobollards.com](http://www.ontariobollards.com)